

# PROJECT CASE STUDY

DUBLIN

## OVERVIEW

On this prestigious project, our Speedscreen ballast weighted, non-penetrating, rooftop visual screening system was the ideal solution for the Main Contractor - **Walls Construction**. Calculated to suit the wind loading requirements of the site, it uses ballast weight to keep the screen in place, while completely removing the need for any fixing to the building. This eliminates the necessity for any structural steel, concrete stubs, and weathering around roof penetrations, as the Speedscreen sits straight on top of the single-ply roof and insulation.

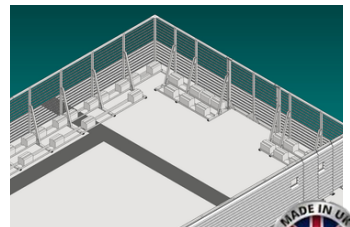
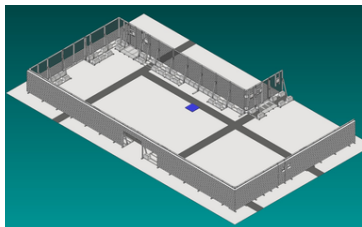
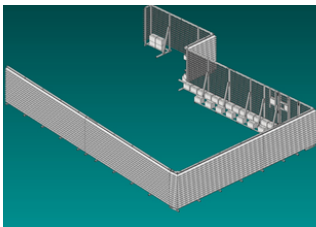
### CLIENT - WALLS CONSTRUCTION

**PRODUCT DESCRIPTION** - 84.5 linear meters of 2m high, ballast weighted, non-penetrating, **Speedscreen** with **Louvre100** finish.

**MARKET SECTOR** - Science & Technology

## KEY FEATURES

- **Speedscreen** self-supporting ballast weighted system
- **Louvre100** - PPC blades to visually conceal the plant yet still allowing 70% free area for adequate airflow
- Conforms to **BS EN 516 2006** and **BS EN 1090-3 2008**



ConfiguredPlatforms



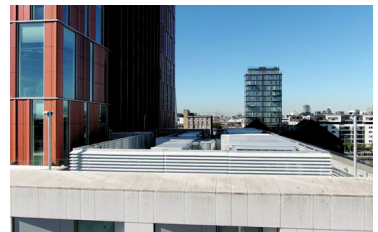
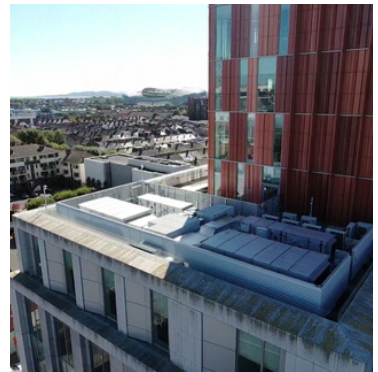


## INSTALLATION

The installation was successfully completed in just 5 days by a dedicated team of 3-4 operatives. Thanks to the flat-packed modular solution and detailed instructions, the entire process proceeded seamlessly, with no issues of missing parts or product waste. The installation team was impressed with the ease afforded by the modular design, making each step of the install straight forward and efficient.

## DESIGN

This system, developed by our in-house design team, was created to screen off the plant equipment without penetrating the roof membrane, utilizing a ballast-weighted concept. The team worked in close collaboration with the client to ensure full compliance with all roof specifications. The modular design offered flexibility, accommodating changes throughout the project.



See below QR codes to our Specification Sheets for all our products used in this job

Click or scan



Speedscreen



Louvre100



Project Video

More Information

[www.youtube.com/configuredplatforms](https://www.youtube.com/configuredplatforms)

ConfiguredPlatforms



[www.configuredplatforms.com](https://www.configuredplatforms.com)