

WEST BAR

PROJECT CASE STUDY

SHEFFIELD

OVERVIEW

This project we provided our **Series 2** freestanding plant deck, with an adjustable base to suit the varied roof falls. This acted as a base for the ASHPs and plant screens, utilising the weight of the units as ballast to mitigate wind loading to the **Standard screens** which were attached to visually conceal the equipment. Our **Speedscreen** was also used in areas to hide unsightly HVAC/R equipment from a rooftop terrace. The entire screen structure and trims were powder coated, to suit the architectural requirements and match in with the red brick theme of the building.



CLIENT - BOWMER & KIRKLAND

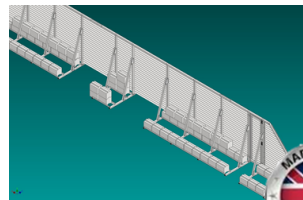
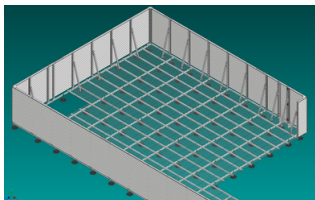
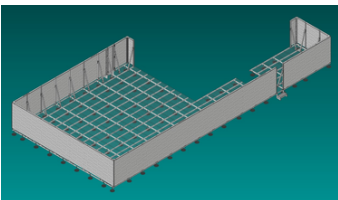
PRODUCT DESCRIPTION - Series 2 platform with 2m high Standard screen & Speedscreens

MARKET SECTOR - Commercial

KEY FEATURES

- **Series 2** platform for a secure, non-penetrating rooftop solution.
- **Standard screen** panels for enclosing and protecting equipment.
- Ballast weighted **Speedscreen** system to visually screen off the equipment from a roof terrace with no roof penetrations.

- Conforms to **BS EN 516 2006** and **BS EN 1090-3 2008**



Configured Platforms



WEST BAR, SHEFFIELD



INSTALLATION

Installation could be completed efficiently on top of a finished roof buildup without affecting or penetrating the waterproofing layer, thanks to the modular design. The systems were prefabricated in our factory in Leeds and delivered flat-packed to site, allowing for rapid assembly with minimal on-site disruption

DESIGN

The design developed by our inhouse design team featured a ballast-weighted self-supporting structure with the Standard Screen aesthetic finish to provide a durable and visually cohesive screening solution without the need for penetrative fixings. All structural components and trims are treated with a high-quality powder coat for enhanced durability and a uniform finish. The Series 2 Adjustable-Height Plant Deck was designed to support the equipment and integrated Standard Screens. The entire assembly is colour matched to align seamlessly with the building's existing colour scheme, ensuring architectural harmony.



See below QR codes to our Specification Sheets for all our products used in this job

Click or scan



Series 2



Standard Screen



Speedscreen

ConfiguredPlatforms



Project Video



[More Information](#)

www.youtube.com/configuredplatforms

www.configuredplatforms.com