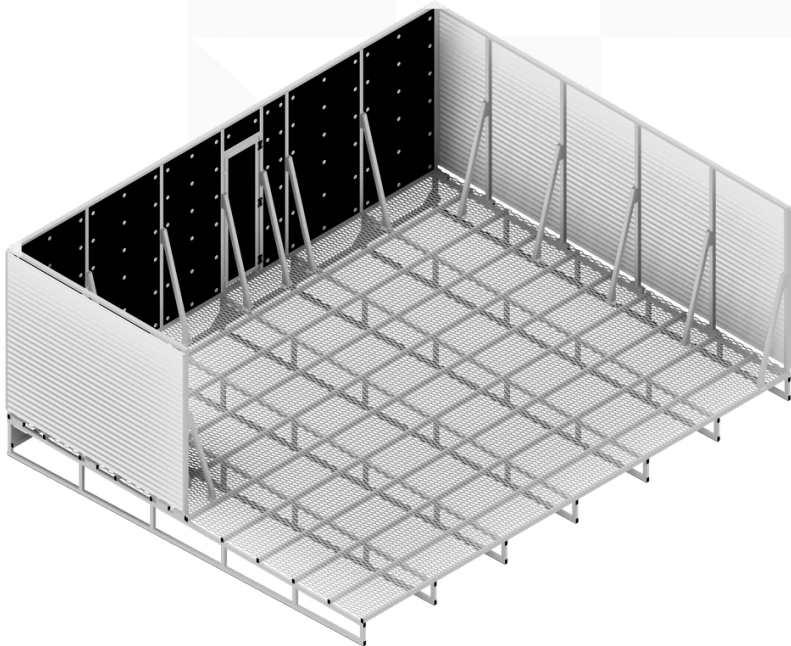


# SCREENS

Assembly Instruction Manual



Configured**Platforms**<sup>®</sup>



Prefabricated plant enclosures & platform systems

 **value**engineering<sup>®</sup>

+44 (0)113 276 0450

[TechnicalSupport@configuredplatforms.co.uk](mailto:TechnicalSupport@configuredplatforms.co.uk)

[www.configuredplatforms.com](http://www.configuredplatforms.com)

# Configured Platforms<sup>®</sup>

value engineering<sup>®</sup>

## SCREENS

Low-Profile Surface Mounted Platforms-  
Ideal For Pitched Roofs



Corner Post **Foot**



Inline Post **Foot**



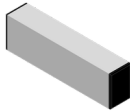
Post **Jig**



Notched **Jig**



Bolt **Sets**



Spacer **Block**



**Post**



20mm **Tek Screws**



**U-Channel**



U-Channel **Splice**



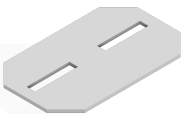
65mm **Tek Screw +**  
Hold Down **Disc**



Corner Red **Bracket**



Post **Brace**



Post Brace **Plate**



**Door**



16mm **Tek Screws**



**Peacemaker**



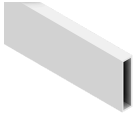
**Soundshield**

# Configured **Platforms**<sup>®</sup>

 **value** engineering<sup>®</sup>

---

## Standard Screen



**Slat**



**Slat Splice**

## Louvre Screen

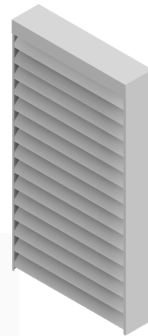


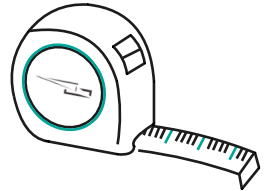
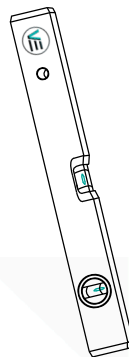
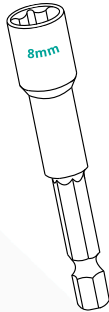
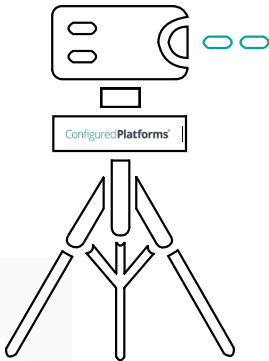
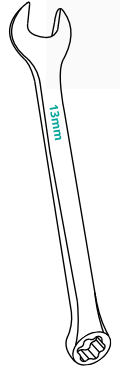
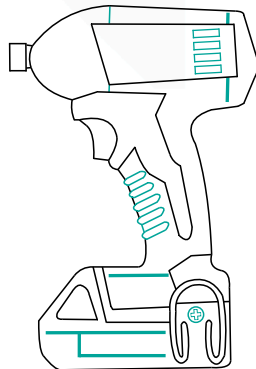
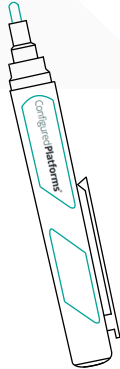
**Louvre**

## Flatscreen

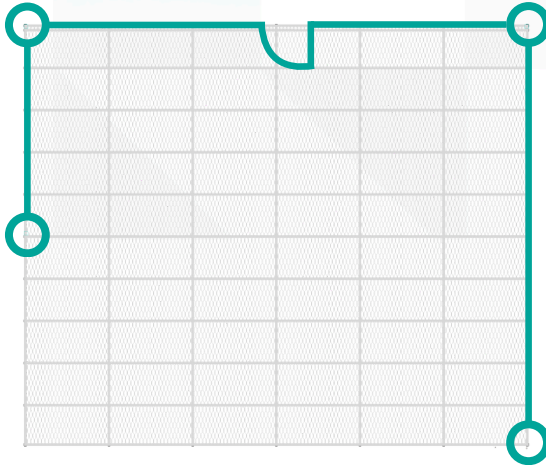


## Peaceflow



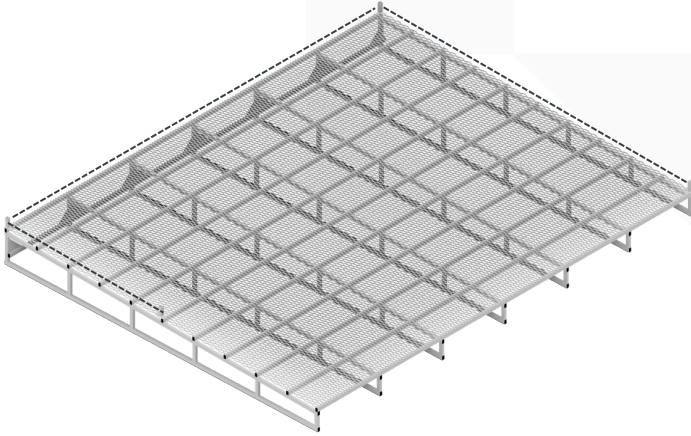


1



1. Mark the location of end, corner and any door or openings as per **Plan Drawing**. Mark which sides of the platform **Screens** will be built.

2



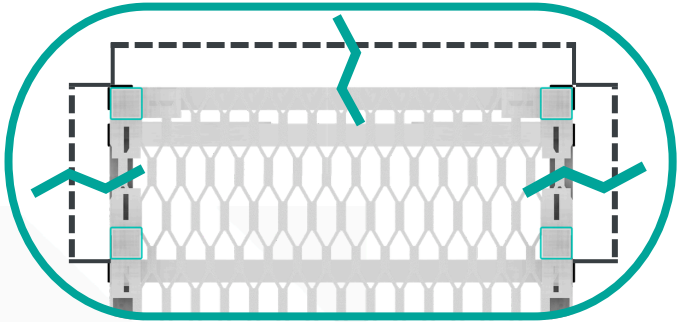
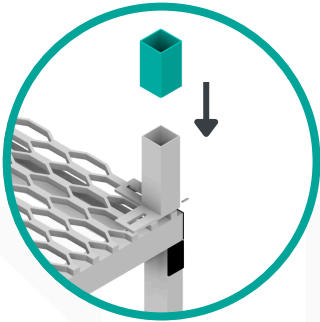
Corner **Post Feet**



Post **Jig**

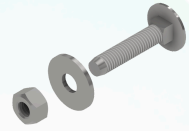
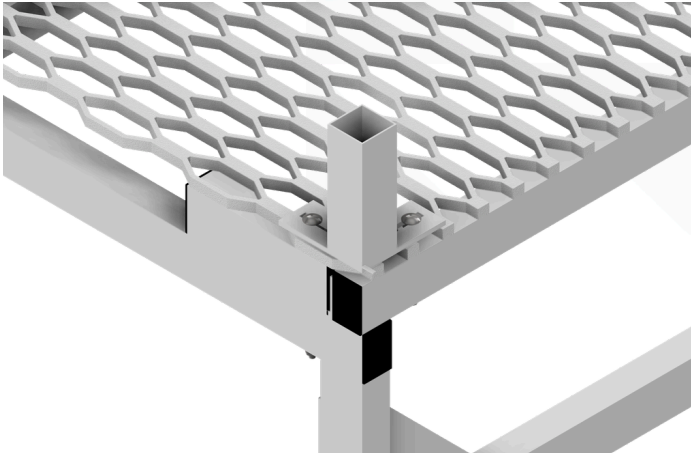


Inline **Post Feet**

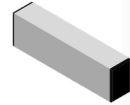


2. Set out end of run and **Corner Post Feet**. See **Plan Drawing** for layout. Overall measurements are **outside to outside** of **Post Jig**. Fix as **Step 3**.

3

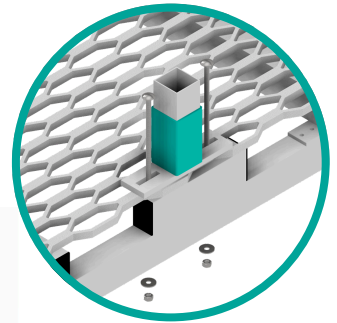
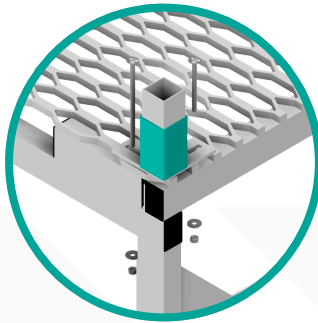
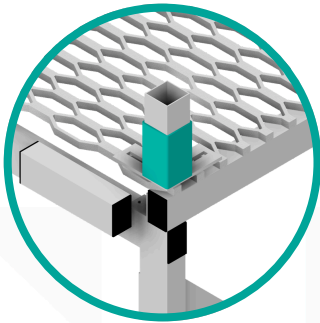


Bolt Set



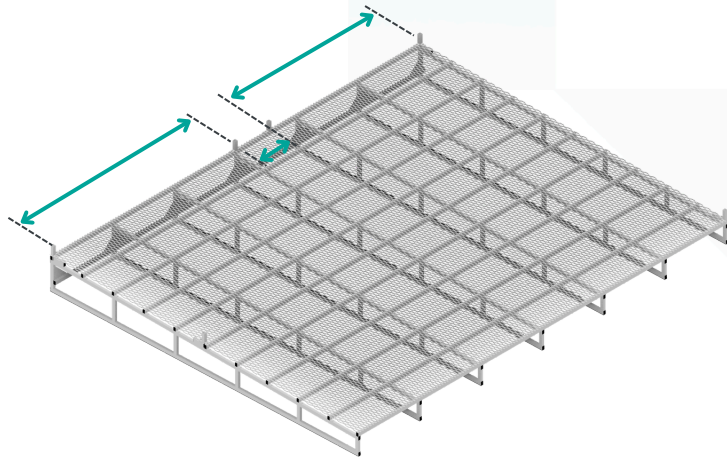
Spacer Block

Series 1	Front/Back	100m Bolts
	Sides	40mm Bolts
Series 2	Front/Back	100m Bolts
	Sides	170mm Bolts + Spacer Block
Series 3	Front/Back	100mm Bolts
	Sides	170mm Bolts + Spacer Block



3. Place **Spacer Block** where required. Drill required holes through **Cross Support/Spacer Block** with 8mm bit and fix all **Post Feet** that have been set out to corners, ends and door or openings with two **M8 Bolt Sets**. Check all measurements using **Post Jig** and **Plan Drawing**.

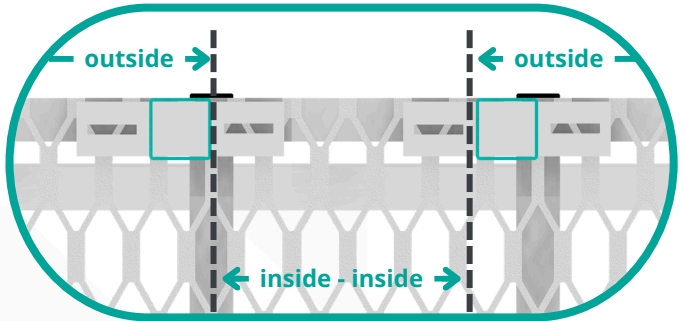
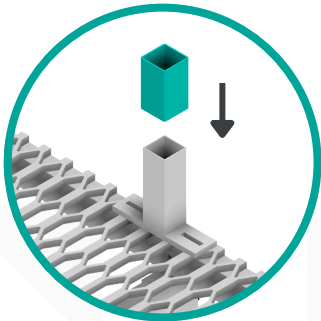
4



Inline **Post Feet**

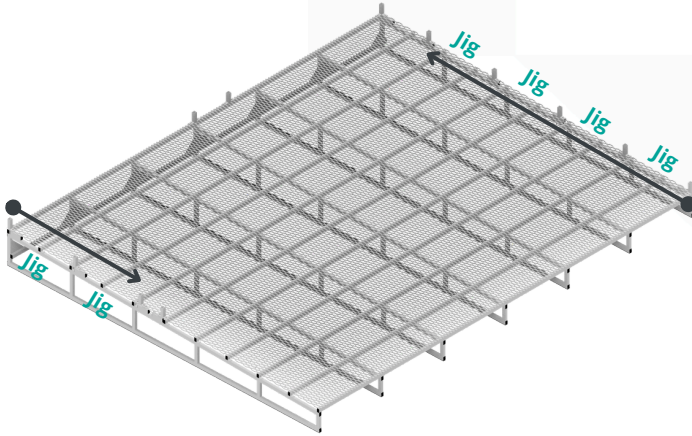


Post **Jig**



4. Mark out locations of the door or openings. Place **Post Jig** over each door or opening **Inline Post Feet**. See **Plan Drawing** for layout, measurements are **inside to inside** of **Post Jigs** for the opening. Fix as **Step 3**.

5



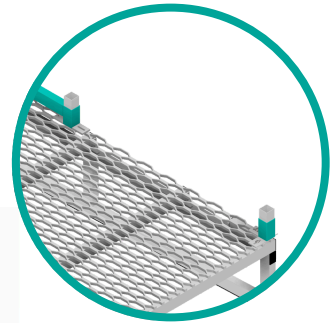
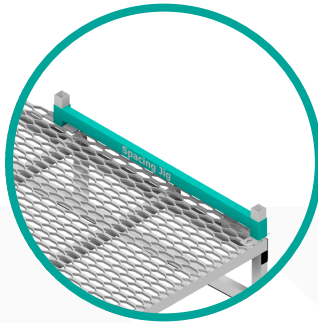
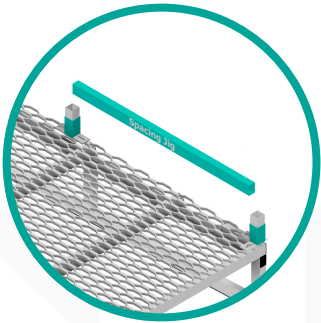
Spacing Jig



Post Jig

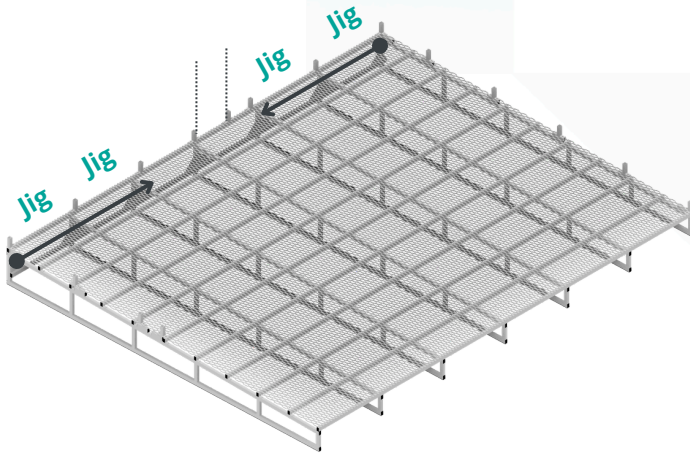


Inline Post Feet



5. For sides that have no openings and no specific **Post** positions are shown on the **Plan Drawing** then start from the inside right with the **Spacing Jig**. This will set the positions of the intermediate **Post Feet**. The face of the **Post Jig** should be flush with the edge of the platform. Fix as **Step 7**.

6



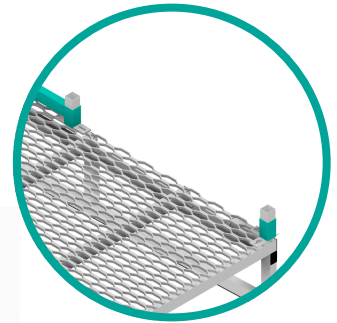
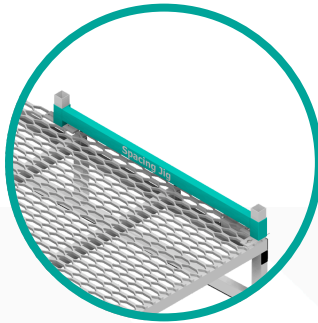
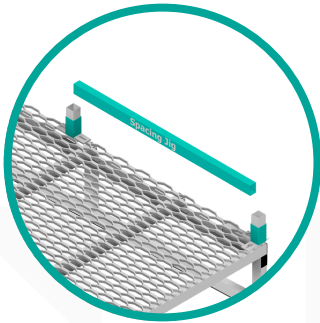
Spacing Jig



Post Jig

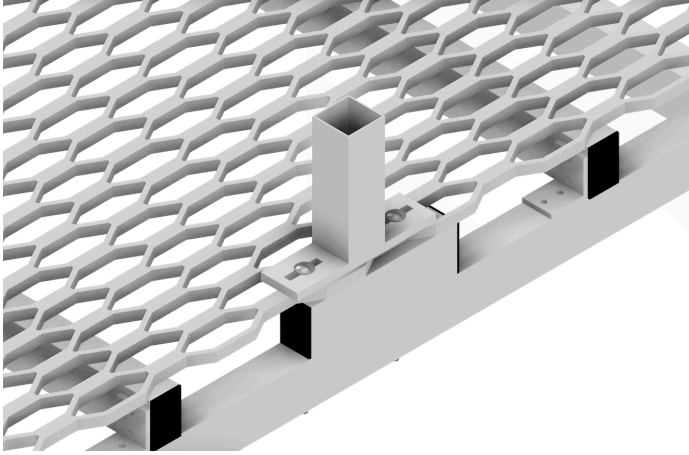


Inline Post Feet

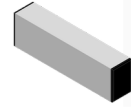


6. For sides with openings or doors. Use the **Spacing Jig** working towards the door or opening from either end to space the intermediate **Post Feet**. The remaining distance will be to the left and right side of the door or opening. The face of the **Post Jig** should be flush with the edge of the platform. Fix as **Step 7**.

7

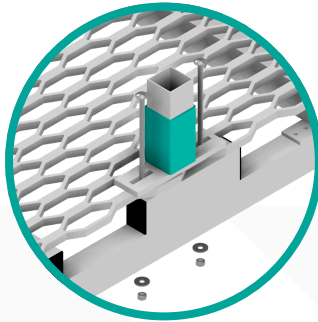
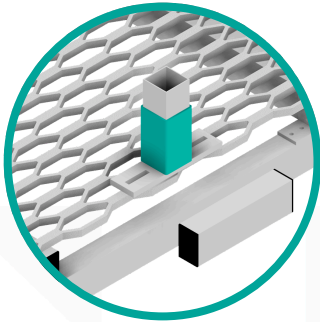


Bolt Set



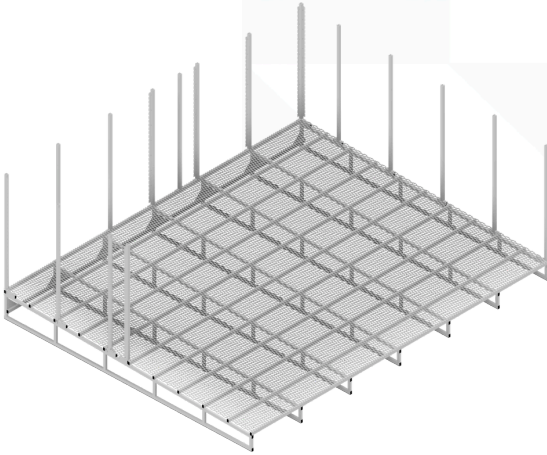
Spacer Block

Series 1	Front/Back	100m Bolts
	Sides	40mm Bolts
Series 2	Front/Back	100m Bolts
	Sides	170mm Bolts + Spacer Block
Series 3	Front/Back	100mm Bolts
	Sides	170mm Bolts + Spacer Block

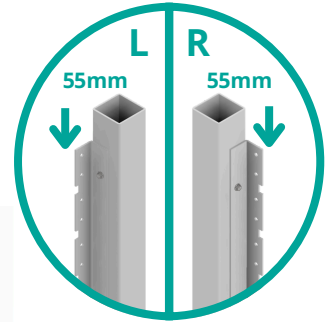
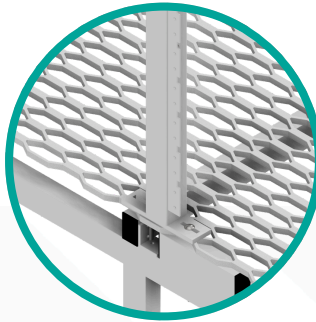
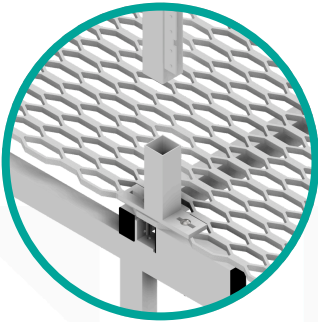


7. Place **Spacer Block** where required. Drill required holes through **Cross Support/Spacer Block** with 8mm bit and fix all remaining **Post Feet** with two **M8 Bolt Sets**. Check all measurements using **Post Jig** and **Plan Drawing**.

8

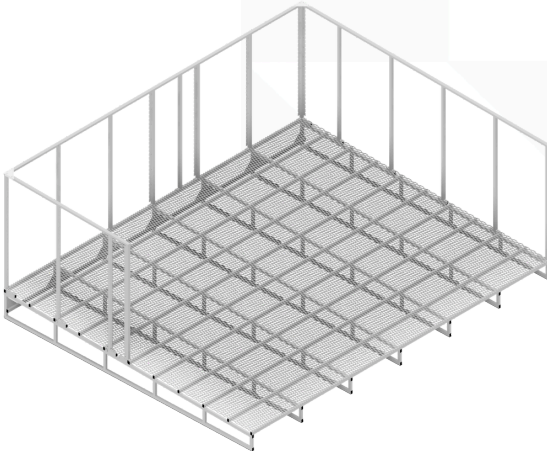


Posts

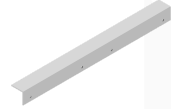


8. Offer the posts onto the **Post Feet** as **Plan Drawing**. See **Plan Drawing** to correctly position any **Left/Right** and **Corner posts**. Screws holding **Spacer Angle** or **Louvre Clips** that interfere with the **Post Foot** require removing.

9



**U-Channel**



**U-Channel Splice**



**Corner Red Bracket**

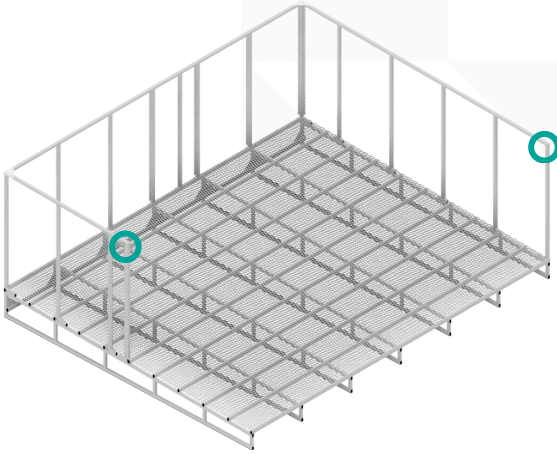


**20mm Tek Screws**

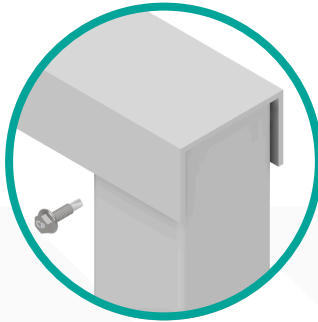


**9.** Use the **Plan Drawing** for the location of the **U-Channel**. Place each **U-Channel** over the top of the **Posts** and fix them on the corners using the **Corner Red Brackets**. If a run has multiple **U-Channel Lengths**, connect using **U-Channel Splices** and **20mm Tek Screws**.

10

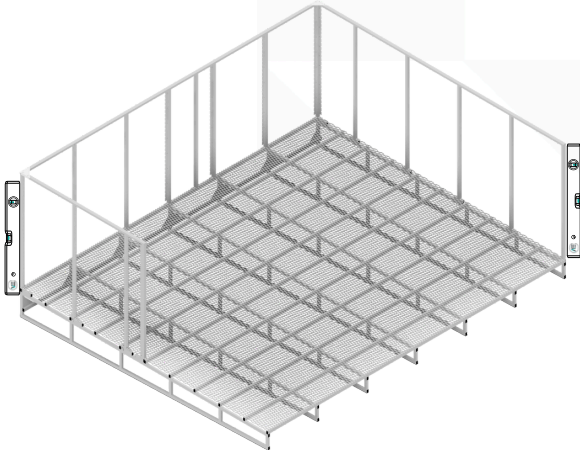


20mm Tek Screws



**10.** Fix the **U-Channel** to the post centrally on the inside face with **20mm Tek Screws**.

11



20mm **Tek Screw**

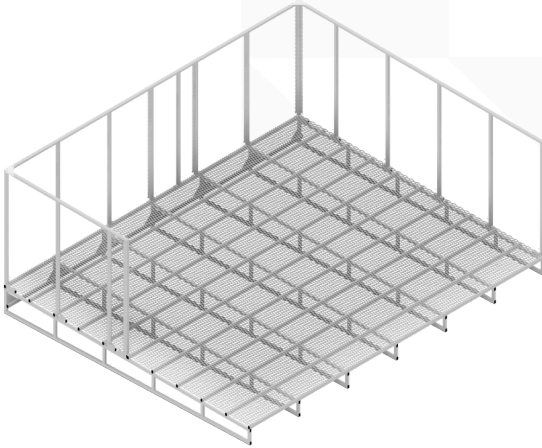


Spacing **Jig**

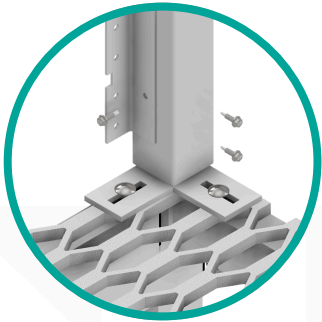


**11.** Vertically plumb all **Corner** and **End Posts** in both directions, then plumb each of the remaining posts using the **Spacing Jig** between the top of the posts. Fix each **Post** to the **U-Channel** on the inside face. Use **20mm Tek Screws**. Fix any screws that were removed to place the **Posts** on the **Post Feet**.

12

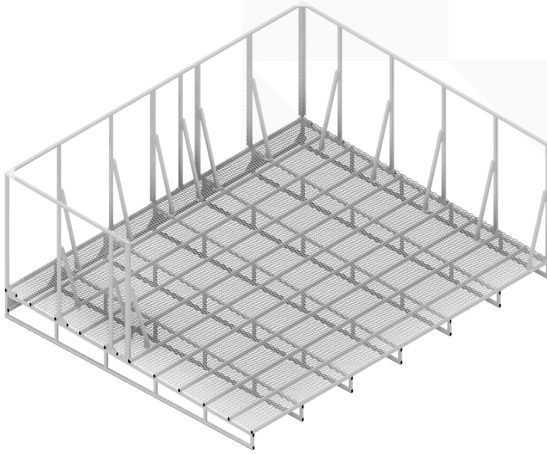


20mm **Tek Screws**



**12.** Check the highest point and fix **Post** with min. 2x **20mm Tek Screws**. Level all other **Posts** and fix with min. 2x **20mm Tek Screws** once the top of the screen is level.

13



Post Brace



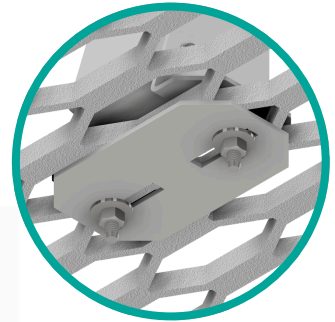
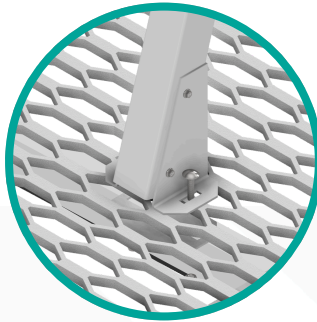
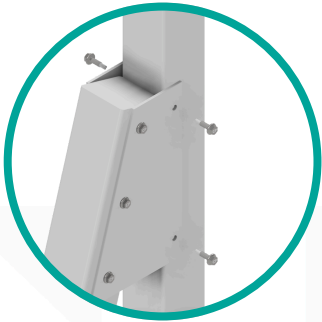
Post Brace Plate



20mm Tek Screws

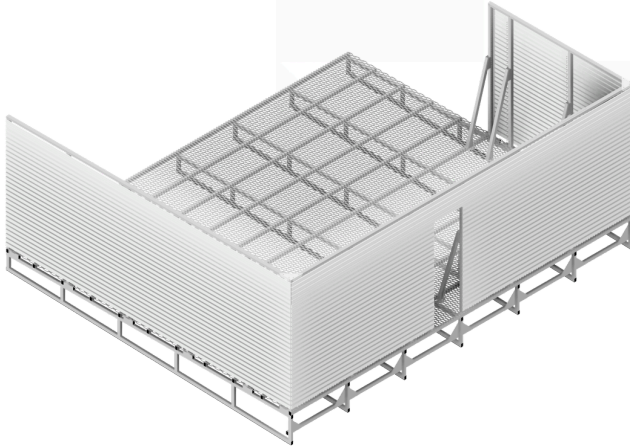


40mm Bolt Sets



**13.** Fix a **Post Brace** to each **Post** as **Plan Drawing**. Use **20mm Tek Screws** into the **Post** and **40mm Bolt Sets** with a **Post Brace Plate** through the mesh. Ensure the **Posts** are plumb and the **U-Channel** is straight before tightening the bolts. Go to **Step 14** for **Standard Screen**, **Step 15** for **Louver** and **Step 16** for **Flatscreen/Peaceflow**.

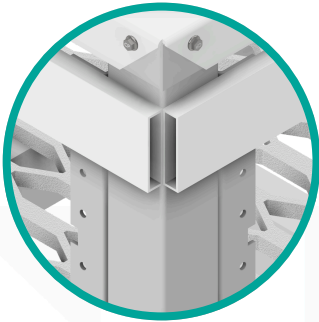
14



Screen Slat

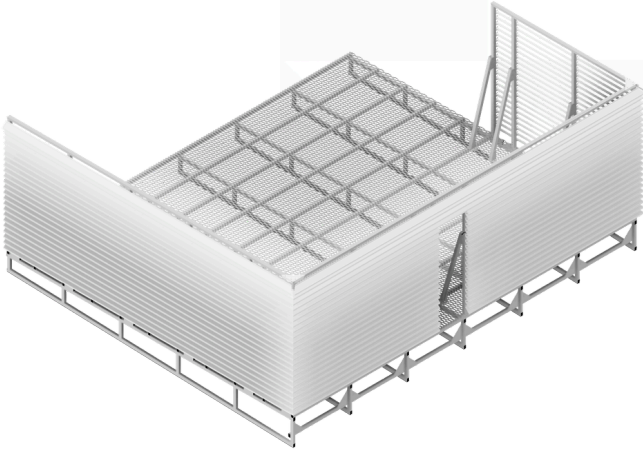


16mm Tek Screws



**14.** Establish from the **Plan Drawing** where each length of **Slat** goes. Begin at a corner and fix the **Slats** to the **Spacer Angle** using **16mm Tek Screws**. Working from the top slat down, keep each slat flush with the outside of the **Corner Post**. Go to **Step 17**.

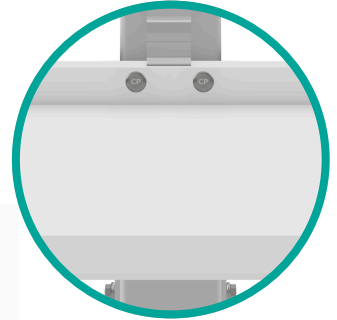
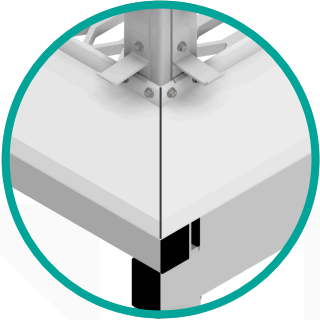
15



Louvre

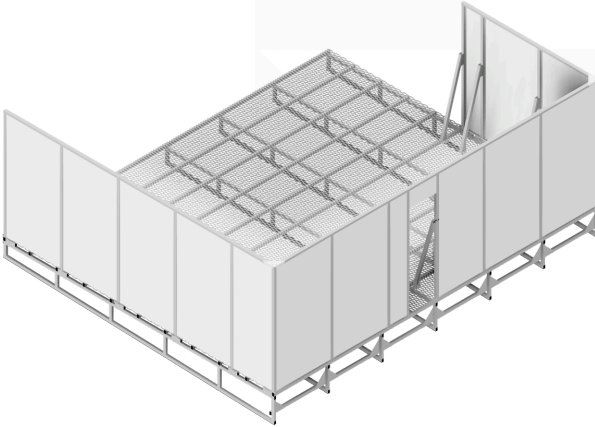


20mm Tek Screws



**15.** Establish from the **Plan Drawing** where each length of **Louvre** goes. Begin at a corner and place a **Louvre** into the bottom louver clip, fix the **Louvres** to the **Post** with 2x **20mm Tek Screws**. Work from the bottom louver upwards, or the top downward if inverted **Louvre** is specified. Ensure corner mitres meet level. Go to **Step 18**.

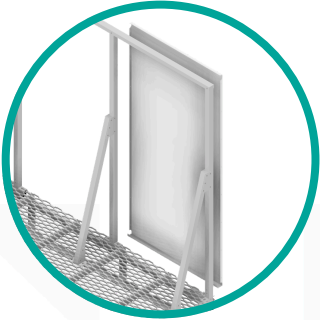
16



Flatscreen Panel

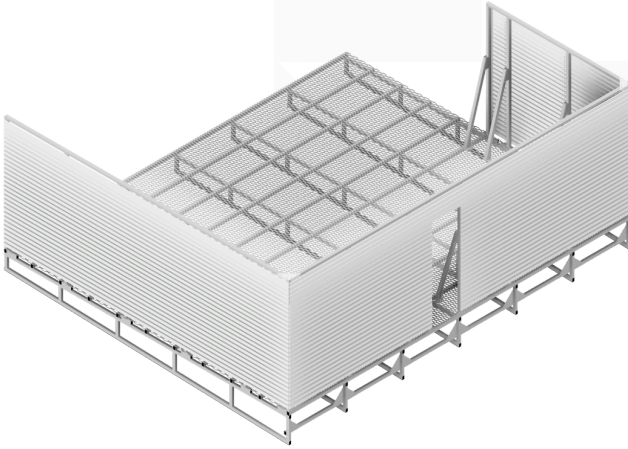


20mm Tek Screws



**16.** Establish from the **Plan Drawing** where each **Flatscreen Panel** goes. Fit the **Flatscreen Panel** with single flange to the inside of the **U-Channel**. Flush the front face of the **Flatscreen Panel** with the front of the **Posts**. Fix in all holes provided with **20mm Tek Screws**. Go to **Step 21**.

17



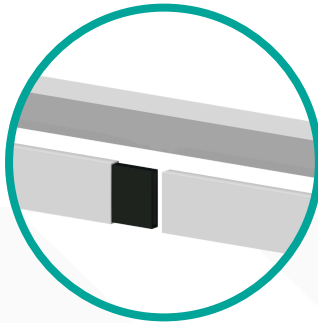
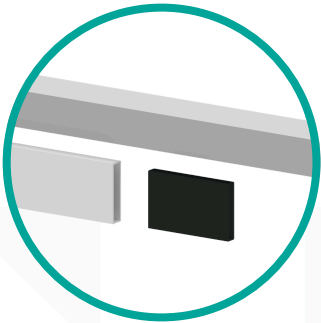
Screen **Slat**



Slat **Splice**

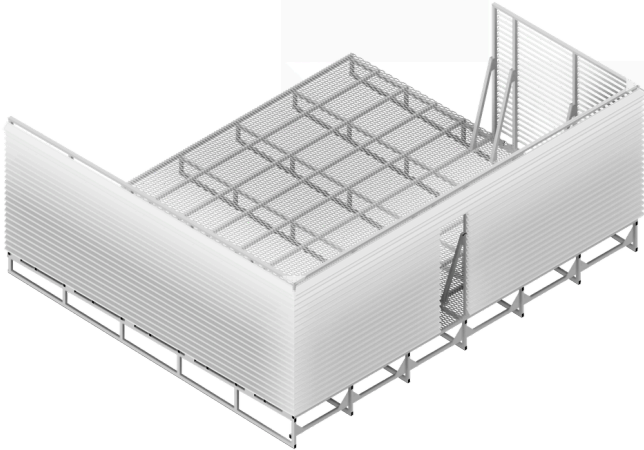


16mm **Tek Screws**



**17.** If there are multiple lengths of slat on one run, fix the first lengths as **Step 14** then tap in the **Slat Splices** into the ends. Then tap the **Slat** over the **Slat Splice**, continue to fix as **Step 14**. Go to **Step 19**.

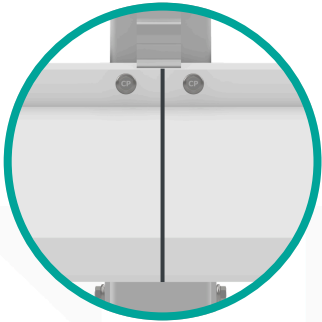
18



Louver

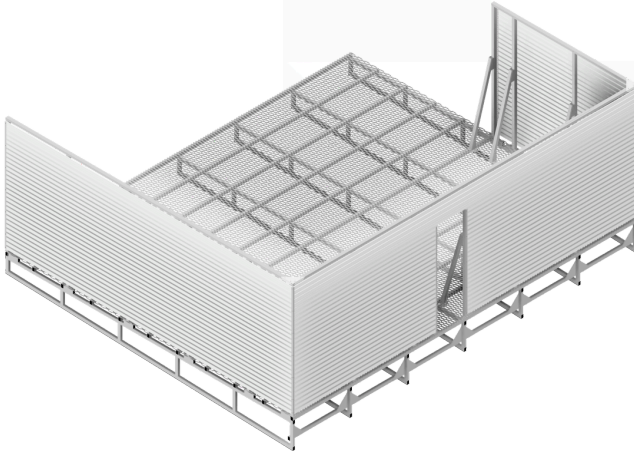


20mm Tek Screws



**18.** If there are multiple lengths of **Louvre** on one run, fix the first lengths as **Step 14**. The **Louvre** joint is centred on the post. Fix with 1x **20mm Tek Screw** at the end of each **Louvre**. Go to **Step 20**.

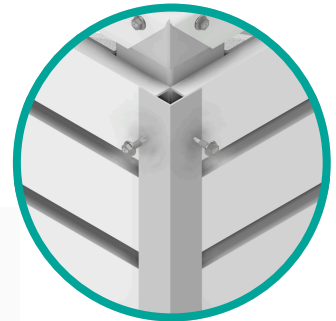
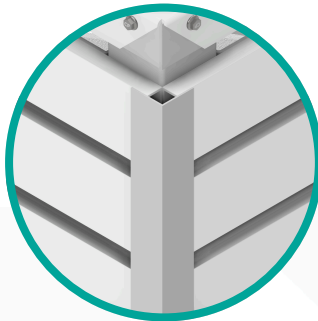
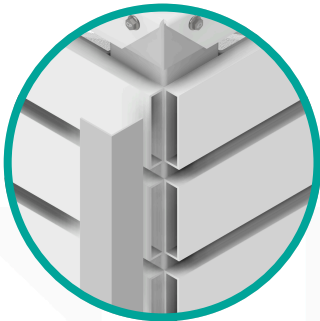
19



Trim Angles

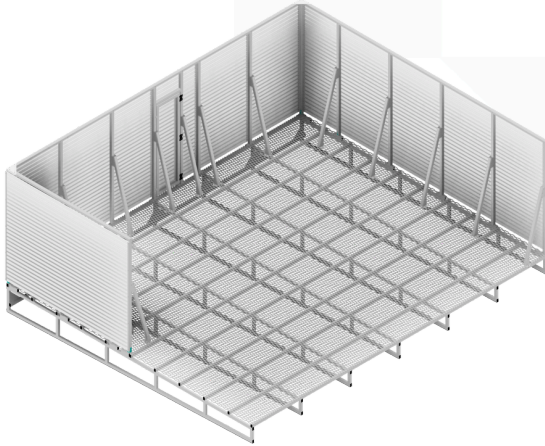


16mm Tek Screws



**19.** Once all the **Slats** are in place, fix the **Trim Angles** to each external corner and to any the open **Slat** ends using **16mm Tek Screws**. Fix at min. centres vertically 560mm, if a door is present, copy factory fitted fixing positions.

20



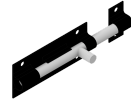
Door



Door Hinge



20mm Tek Screws

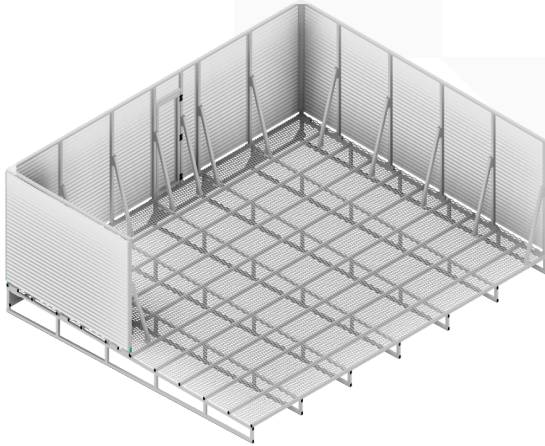


Pad Bolt



20. Fix the door in place using all holes in **Hinges** using **20mm Tek Screws** ensuring that the **Door** opens as **Plan Drawing**. The **Slats** on the door should line through with the **Slat** on the **Screen**. Fix the **Pad Bolts** as site requirements using **20mm Tek Screws**.

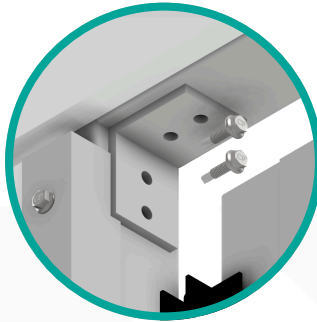
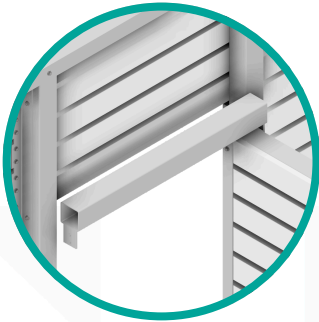
21



Overdoor Rail

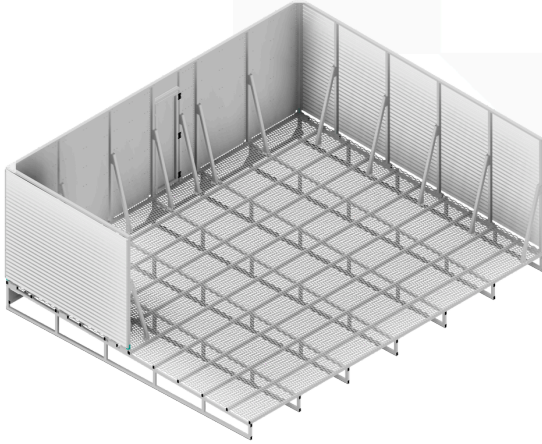


20mm Tek Screws



**21.** Fix the **Overdoor Rail** using **20mm Tek Screws** as **Plan Drawing**. Go to **Step 22** if **Standard Screen** or **Louvre**, **Step 24** if **Flatscreen/Peaceflow**.

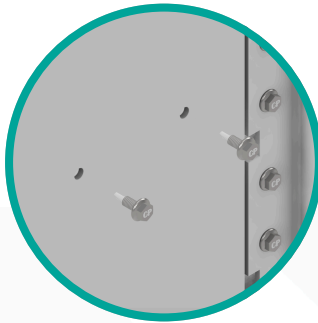
22



Soundshield

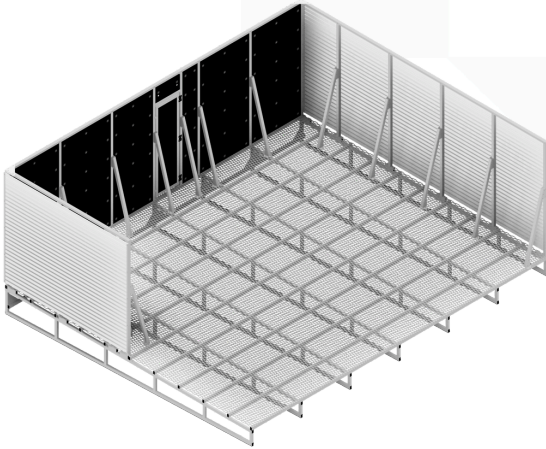


16mm Tek Screws



**22.** If **Soundshield**, establish from the **Plan Drawing** the location of each **Soundshield Panel**. Tuck the top (marked with a V) of the panels into the **U-Channel**. The **Soundshield** should not overlap **Spacer Angle**. When into **Slat** fix with **16mm Tek Screws**, do not use **20mm Tek Screws** as they will penetrate the front. If **Standard Screen** go to **Step 23**, **Step 24** if **Louvre**.

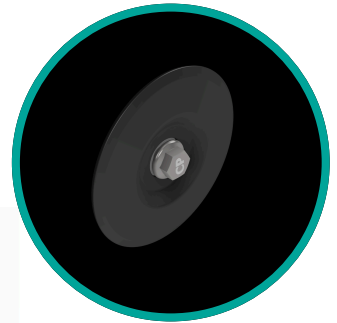
23



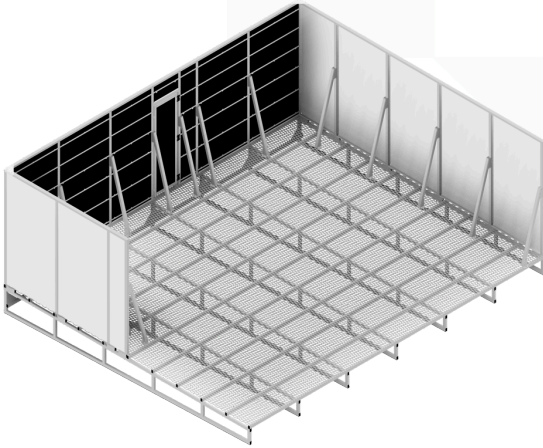
Peacemaker



65mm Tek Screw  
with Disc



**23.** To install **Peacemaker**, tuck each **Peacemaker Panel** into the **U-Channel**. Fix through the **Peacemaker** into the slat using the **65mm Tek Screw + Disc**. Only turn the screw two threads into the back of the **Slats** or they will penetrate the front of the **Slat**. **Acoustic+** is a combination of **Soundshield/Peacemaker**, follow the steps in order.



Peacemaker



Fixing Strap



20mm Tek Screws



**25.** To install **Peacemaker**, tuck the top of each **Peacemaker Panel** into the **U-Channel**. See **Plan Drawing** for location of **Fixing Straps**, they should run through over the white marks on the **Peacemaker**. Fix to posts with **20mm Tek Screws** through all holes provided. **Acoustic+** is a combination of **Soundshield/Peacemaker**, follow the steps in order.