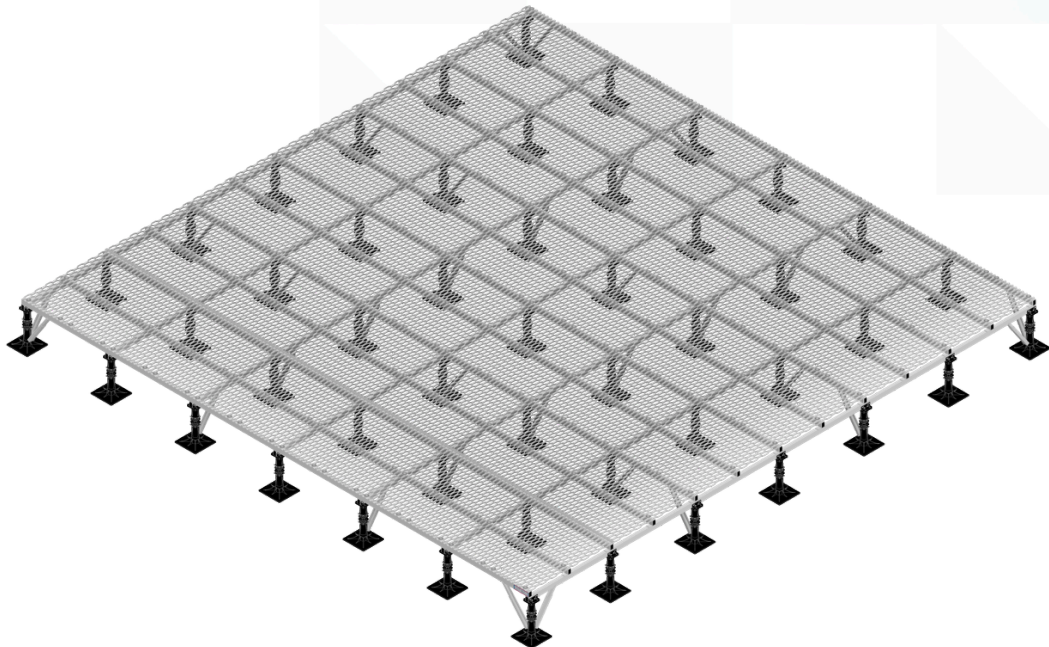


# SERIES2

Assembly Instruction Manual



Configured**Platforms**<sup>®</sup>



Prefabricated plant enclosures & platform systems

 **value**engineering<sup>®</sup>

+44 (0)113 276 0450

[TechnicalSupport@configuredplatforms.co.uk](mailto:TechnicalSupport@configuredplatforms.co.uk)

[www.configuredplatforms.com](http://www.configuredplatforms.com)

# Configured **Platforms**<sup>®</sup>

 **value** engineering<sup>®</sup>

## SERIES 2

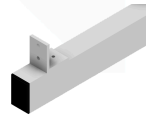
Low-Profile Surface Mounted Platforms-  
Ideal For Pitched Roofs



S2 Base **Foot Set**



S2 Diagonal **Braces**



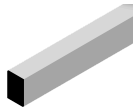
S2 **Bearer**



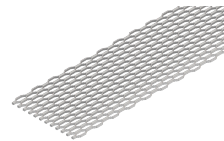
RHS **Splice**



35mm **Tek Screw**  
+ Hold Down **Disc**



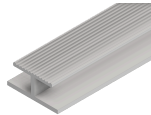
Cross **Support**



Mesh **Sheet**



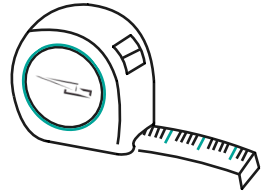
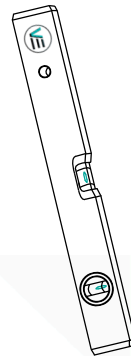
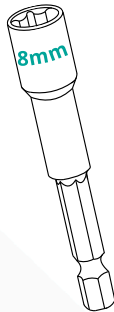
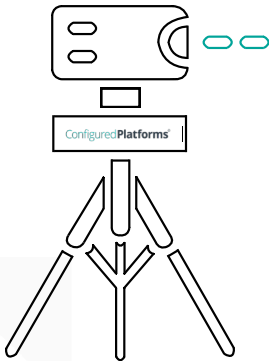
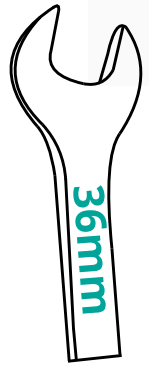
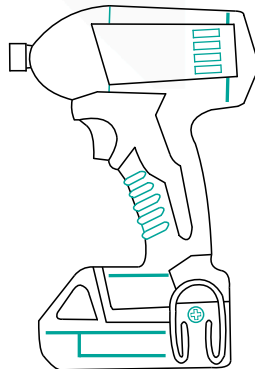
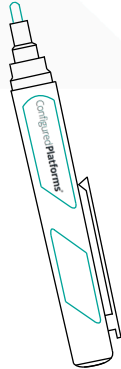
Certification **Plate**



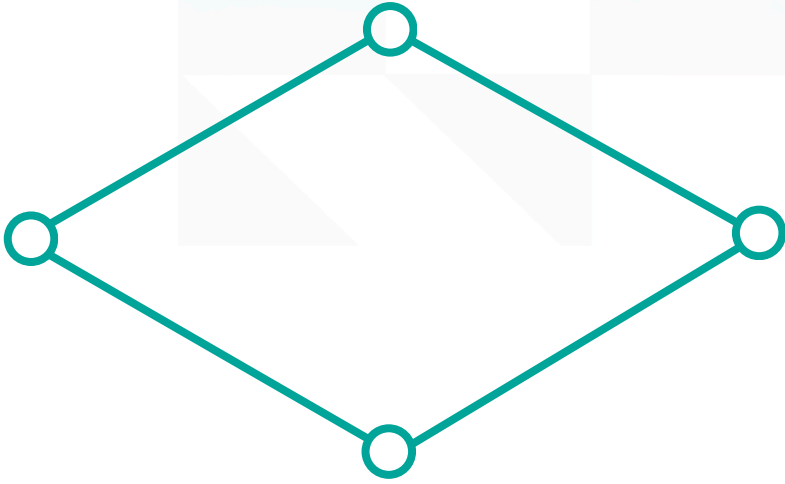
Mesh **Joiner**



20mm **Tek Screws**

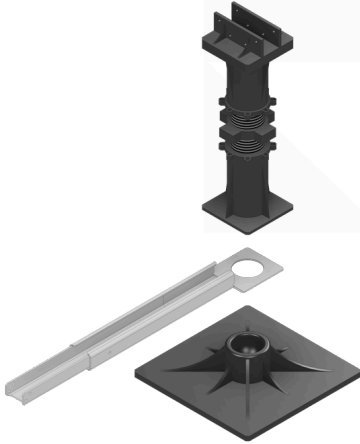


1



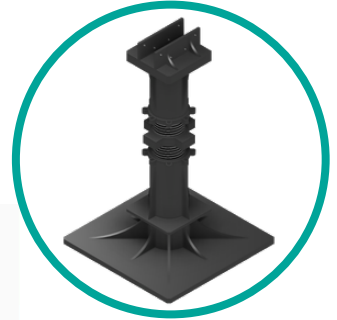
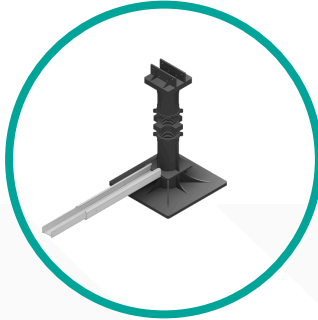
1. Mark out the outline of the platform size in the location where you will place the platform.

2



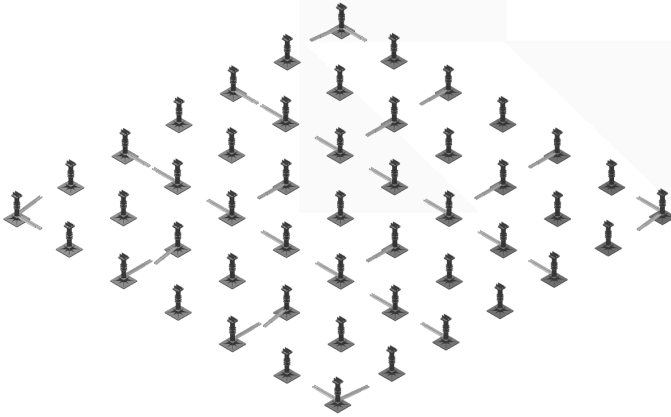
S2 Base **Foot**

Diagonal **Brace**



2. Check **Plan Drawing** for quantity of **S2 Base Feet** with **Diagonal Braces**. Fit **S2 Diagonal Braces** onto ball by applying pressure at slight angle. Assemble **S2 Base Feet** by pressing the ball joint into the socket.

3



S2 Base **Foot** + 1x S2  
Diagonal **Brace**



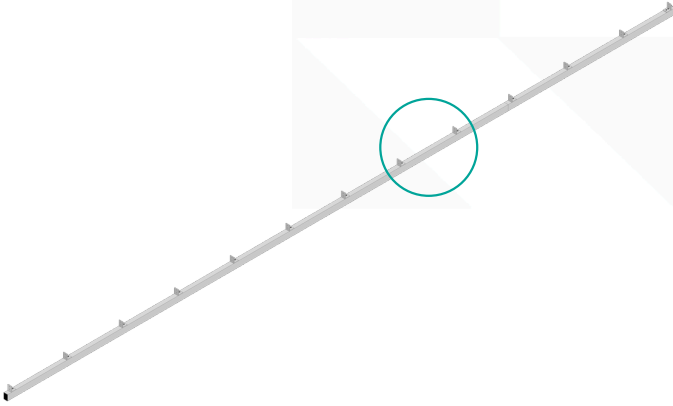
S2 Base **Foot** + 2x S2  
Diagonal **Brace**



S2 Base **Foot**

3. Referencing the **Plan Drawing**, set out the **S2 Base Feet** within the marked out area.

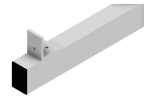
4



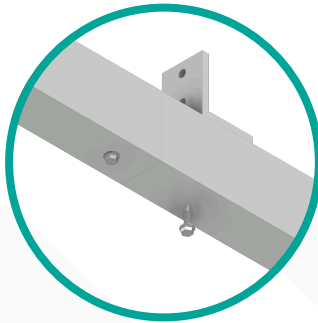
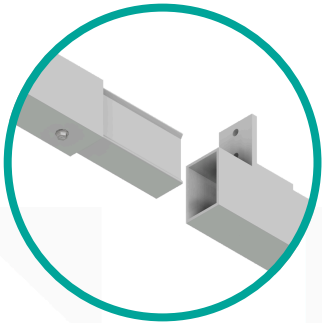
RHS Splice



20mm Tek Screws

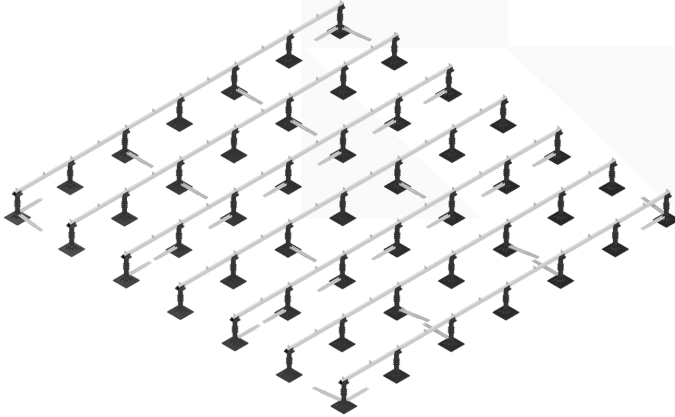


S2 Bearer

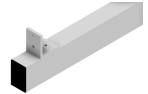


4. Referencing the **Plan Drawing**, position the **S2 Bearers**. If the **Bearers** are supplied in multiple pieces, join using **20mm Tek Screws** and **RHS Splice**.

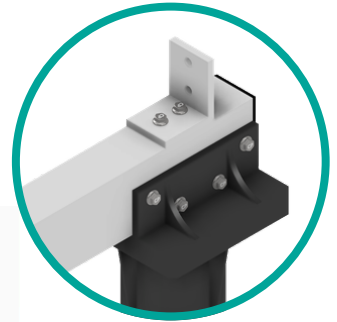
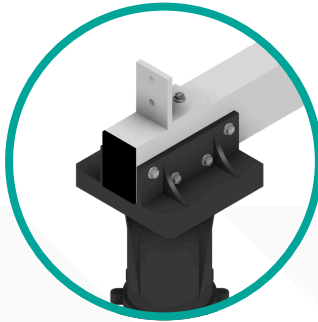
5



20mm Tek Screw

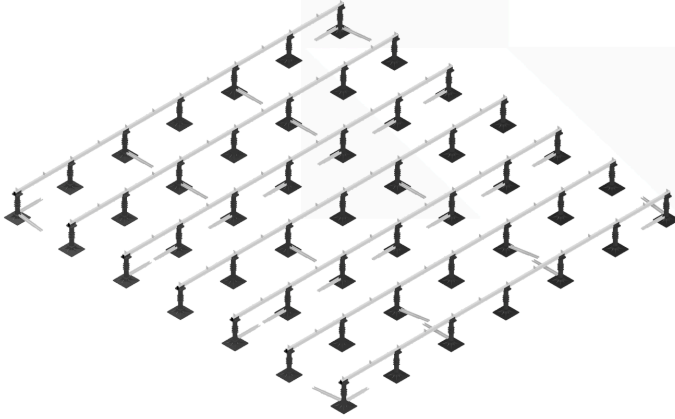


S2 Bearers

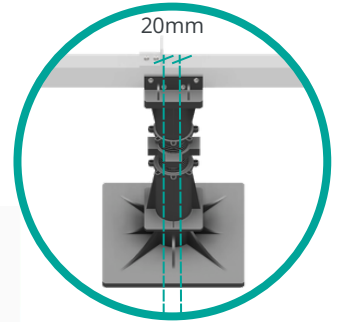
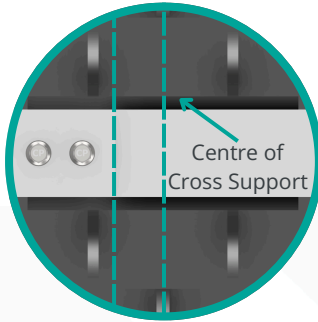
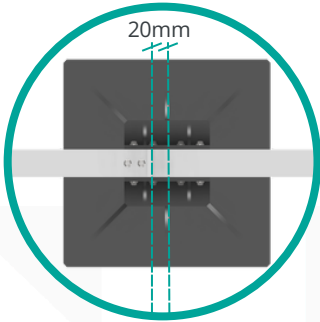


5. Place the **S2 Bearers** into the saddles of the **S2 Base Feet**. Fix all the end **S2 Base Feet** flush with the end of the **S2 Bearer** with **20mm Tek Screws** into all holes provided.

6

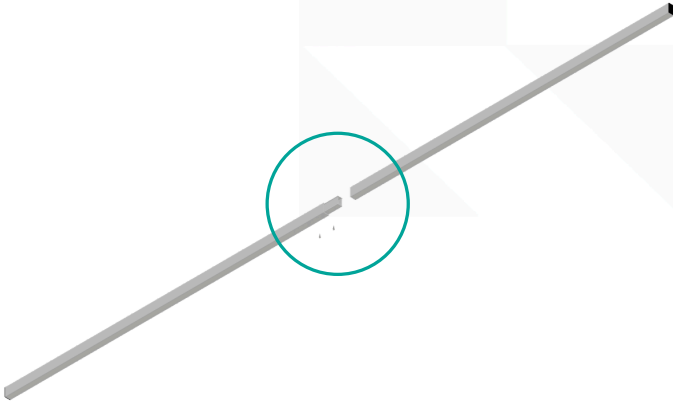


20mm **Tek** Screws



6. Where no specific locations are shown on the **Plan Drawing**, space the **S2 Base Feet** at 1200mm centres ensuring centre of foot is lined up where a **Cross Support** will run. This can be measured by 20mm from the Bearer Bracket.

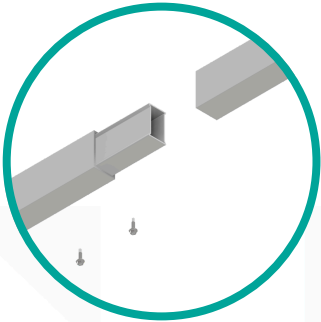
7



RHS Splice

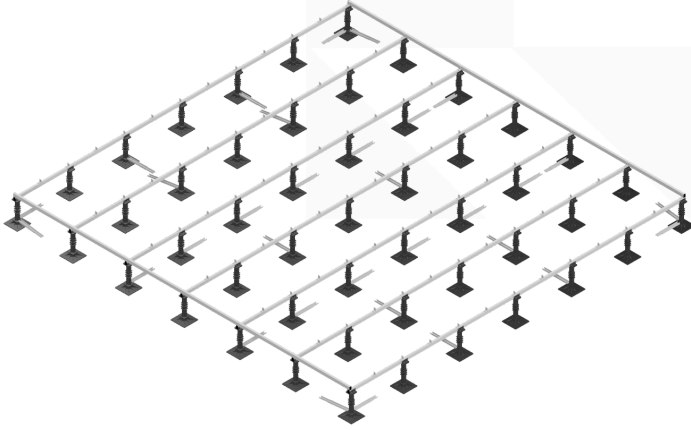


20mm Tek Screws



7. Reference the **Plan Drawing** for **Cross Support** locations. If the **Cross Supports** are in multiple lengths, join using **20mm Tek Screws** and the **RHS Splice**.

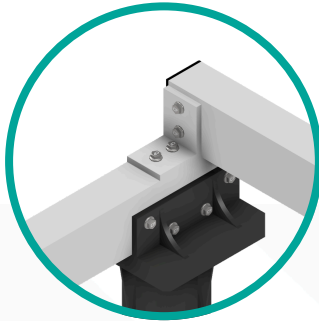
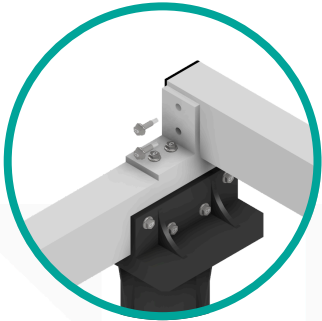
8



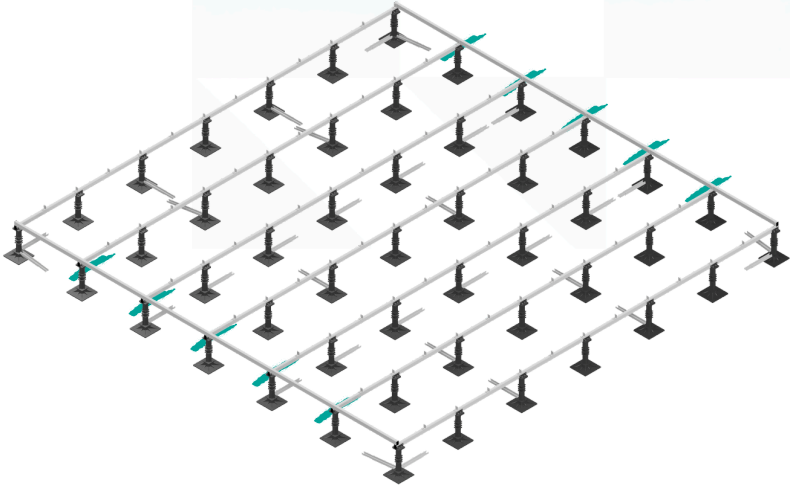
Cross Supports



20mm Tek Screws

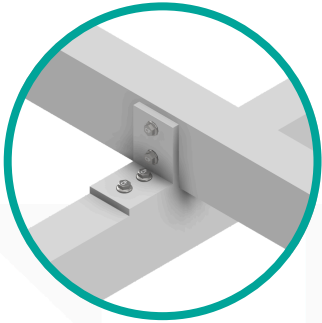
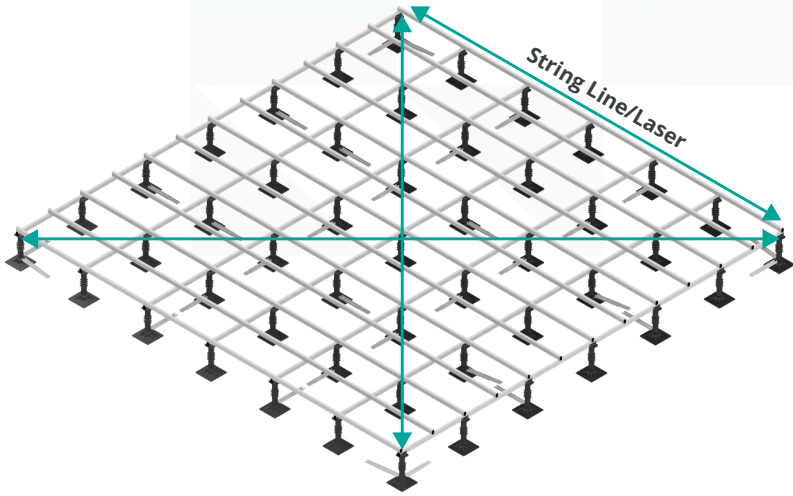


8. Place the **Cross Supports** on the Bearers and fix to the Bearer Brackets in the four corners with **20mm Tek Screws**. The **Cross Supports** ends should be flush with the edge of the **Bearers** with the end cap protruding.

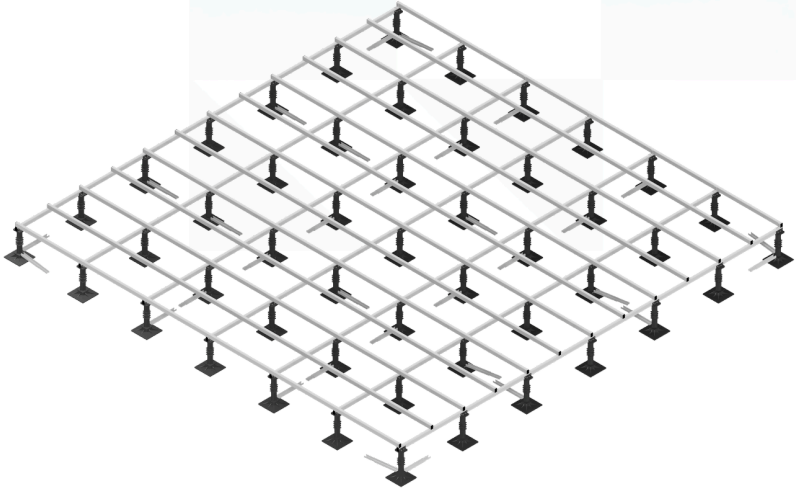


9. Mark the positions for the intermediate **S2 Bearers**. If positions are not noted on drawing, the **S2 Bearers** are equally spaced. (Number of spaces divided by length of platform). Spacing should not be greater than 1200mm unless specified.

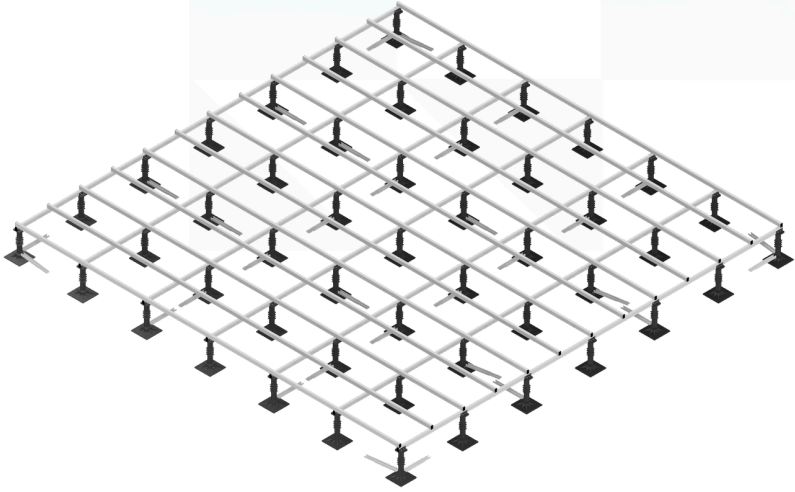
10



10. Place remaining **Cross Supports** on the **S2 Bearers** and ensure all fixings are in place and tight. Check for square using the platform's diagonal measurements and check that the frame is straight along the length by using a string line/laser.

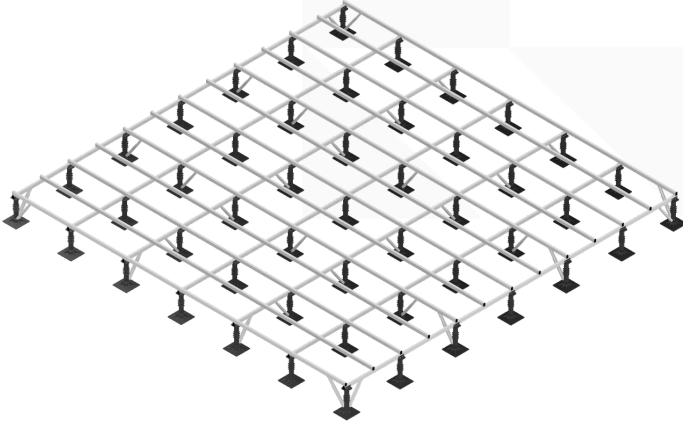


**11.** Find the highest point on the roof by using a laser level and placing the staff on various points over the frame.

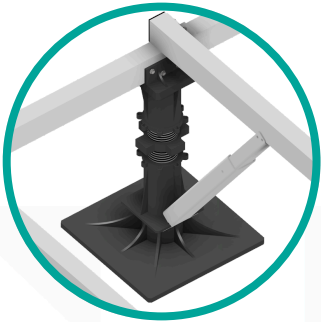


**11.** Level every second **Base Foot** in a grid pattern across the platform to match the **Base Foot** on the highest point of the roof. Return and level the remaining **Base Feet**. Check using spirit/laser level or stringline.

12

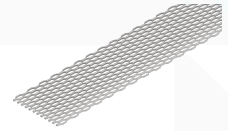
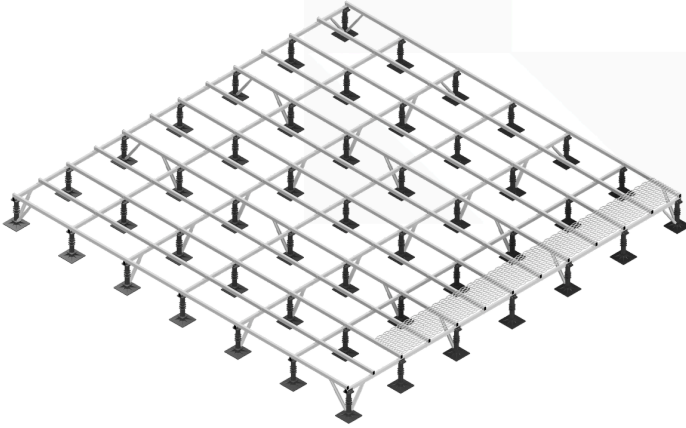


20mm **Tek Screws**



**12.** Once the frame is levelled, position **Diagonal Brace** at approximately 45 degrees. Draw **Diagonal Brace** up to **Cross Support or Bearer** and fix with **20mm Tek Screws**. Lock sliding part in place with **20mm Tek Screws**.

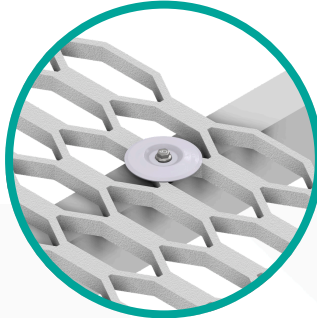
13



Mesh Sheet

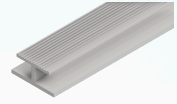
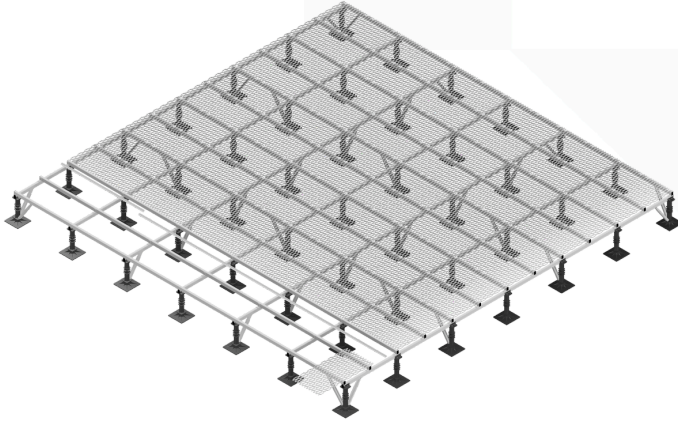


35mm Tek Screw +  
Hold Down Disc

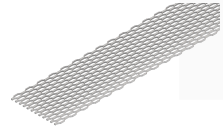


**13.** Place the **Mesh** on the **Cross Supports**, keeping it flush with the edges. Ensure the **Mesh** does not creep or run short when laid out, adjust placement before fixing. Fix **Mesh** ends using **35mm Tek Screw** with a **Hold Down Disc**, fixing to the **Cross Support** through the second full diamond of each **Mesh Sheet**.

14



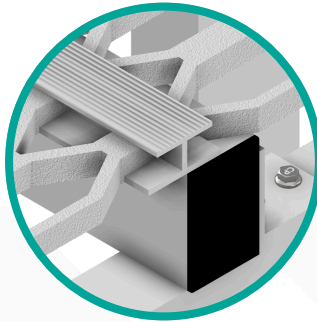
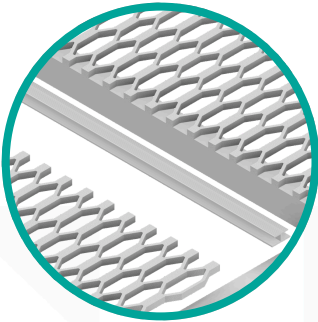
Mesh **Joiner**



Mesh **Sheet**

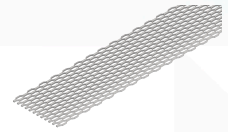
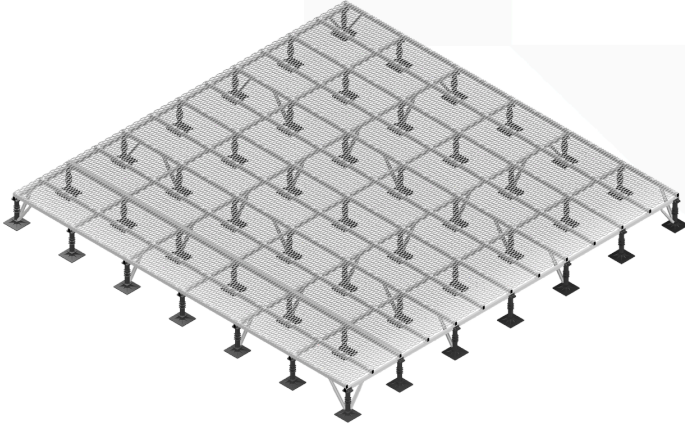


35mm **Tek Screw** +  
Hold Down **Disc**



**14.** If additional rows of **Mesh** are required, fix the first row of **Mesh** down as **Step 13**. Place the end of each sheet of **Mesh** into the **Mesh Joiner** as you go, a rubber mallet can be used if required.

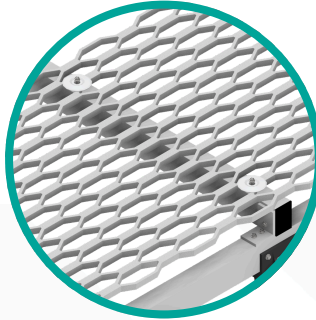
15



Mesh Sheet

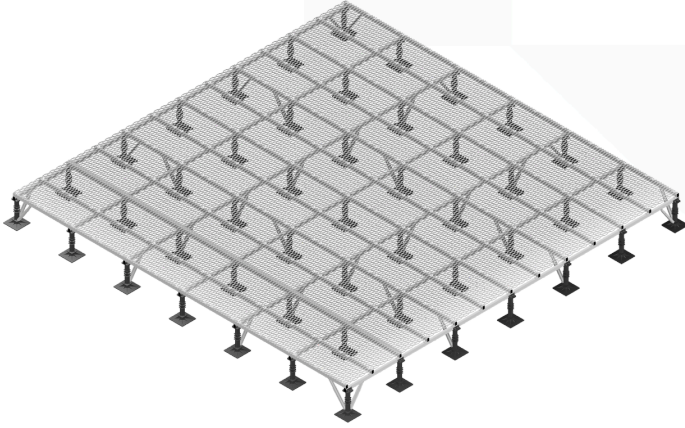


35mm Tek Screw +  
Hold Down Disc

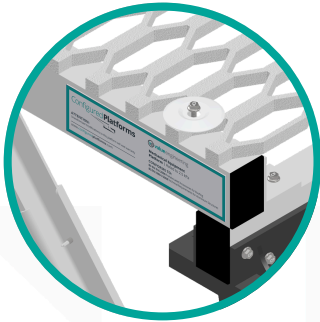


**15.** Fix the **Mesh** down in all the locations where the **Mesh** crosses each of the Cross Supports. Use **35mm Tek Screws** and **Hold Down Discs** in the second full diamond in from the edge of each **Mesh Sheet**.

16



**Certification Plate**



**16.** Fix the **Certification Plate** to one of the **Cross Supports** where it can be seen. Peel off the backing tape and pressing firmly on to the **Cross Support**.